



NATIONAL SURGICAL CORPORATION

Shelving & Storage Solutions

Customised shelving and storage solutions for the hospital and healthcare industry

ISO 9001
BUREAU VERITAS
Certification



National Surgical Corporation
is certified to
AS/NZS ISO 9001:2015

A proudly founded and owned Australian company - providing value to our customers beyond the product

Shelving and storage solutions



Chrome wire shelving



Chrome wire trolleys



Chrome wire baskets



Compactors



Accessories for chrome wire



Racks



Ecoline carts



Apollo storage carts



Hermes case carts



Cabinets high density



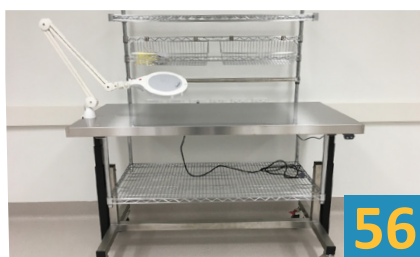
Cabinets underbench



Accessories for high density units



Underbench racks and carts



Height adjustable tables



Mobile wrap rack

for the hospital and healthcare industry

NSC Shelving and Storage Solutions provides hospitals and other healthcare facilities with customised shelving solutions. NSC designed and developed our storage systems specifically for use in the Australian medical industry and can be installed in any department.

As a distributor of surgical consumables and instruments, we understand the space and storage requirements of these specialised areas, particularly theatres and CSSD and can design a solution to meet your department's storage needs.

Quality and performance is of paramount importance to our clients so all our products are manufactured and installed to assist our customers in complying with Australian Standard AS4187 and OH&S requirements.

Our storage systems work in conjunction with each other and most rooms are now designed with a combination of chrome wire shelving, trolleys, high density storage (Pegasus), chrome wire baskets and accessories.

Experts in hospital redevelopments and refits

NSC has installed and delivered storage solutions to over 180 customers, mostly hospitals, to assist in redevelopments, fitouts and upgrades.

NSC has the capabilities to design and install large scale hospital redevelopment projects. NSC provides detailed CAD designed drawings to demonstrate the correct scale and size of the shelving site.

Stocked lines

With thousands of shelving and storage components available as part of our range, it is difficult for us to stock all of these items. We endeavour to stock our most popular ranges and sizes so that your solution is delivered to you quickly.

However, sometimes the delivery of your project may take longer for delivery and installation. We will always advise timeframes when quoting



Chrome wire shelving

NSC chrome wire shelving systems are contract manufactured specially for NSC to our specifications which have been **designed specifically for the Australian medical industry**

Features:

- High quality chrome wire
- Allows air to circulate and helps prevent dust collection
- Reduces time, labour and frequency of cleaning
- Commercial grade chrome wire
- High load capacity and structural rigidity
- Lightweight when unloaded
- Height adjustable shelves
- Wide range of accessories

NSC chrome wire shelving systems are constructed from high quality chrome plated steel and come with a 2 year warranty

Chrome wire shelving units are ideal for:

- Theatre store rooms
- CSSD storage, sterile stock, set-up trolleys
- Equipment and ward store rooms
- Treatment rooms, surgical units
- Day surgeries
- Fluid storage

STATIC CHROME WIRE SHELVING

- Various sizes to fit within any storage area
- Installed with adjustable feet to secure to any flooring
- Adaptable for any area
- Shelf heights can be adjusted to suit your storage needs
- Can be built side-by-side and back-to-back
- Each shelf can hold up to 150kg, total unit up to 500kg per unit



CHROME WIRE TROLLEY/ MOBILE UNITS

- Trolley units allow safe and fluid movement around departments
- Installed with heavy duty 125mm castors (2 swivel, 2 brake)
- Shelf heights can be adjusted to suit your storage needs
- Each shelf can hold up to 150kg, total unit up to 400kg per unit



Ideal for theatre set up trolleys



Heavy duty
castors



PVC COVERS

- Manufactured in Australia from high quality, clear PVC
- Comes standard with 2 durable front zippers (on edge of both sides)
- Custom made to any size
- Available in different colours on request
- Logos or text can be applied on the cover in any size
- Optional accessories:
 - 'Stay-put', strap to hold the flap up whilst rolled open
 - Openings on sides or rear for handles
 - Pouches to store paperwork
 - Additional zippers



Stainless steel shelving

NSC stainless steel wire shelving systems are manufactured in high quality and durable 202 stainless steel which can be used in various wet areas, cool rooms and freezers.

Ideal for use in:

- Medical cool rooms
- Hospital kitchen cool rooms and freezers
- Pharmacy and pharmaceuticals research cool rooms
- Cleaners store rooms
- Autopsy rooms
- Chemical storage areas
- Wet areas



When to use stainless steel?

Stainless steel is usually only used in wet areas, high humidity or for caustic environments. Most of the products NSC install are chrome wire, which look very similar to stainless steel and are high quality, and when used in air-conditioned areas for dry storage, will last for decades.

Stainless steel is also much more expensive than chrome wire.

How can you tell the difference between stainless steel and chrome?

Stainless steel tends to have a yellowish/gold tinge, otherwise it looks completely the same as chrome

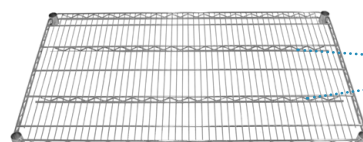
Wire shelving sizes

SIZES AVAILABLE

Shelf depths:



460mm
530mm
610mm



610mm shelves have 2 support
bridges for extra load capacity

Shelf widths:



610mm
760mm
910mm
1070mm
1220mm
1360mm
1520mm
1820mm

Angled:
910mm
1220mm

Static shelving & trolleys can be designed and installed with any number of shelves.

We usually recommend 5 shelves for maximum storage capacity and usability

Shelf heights:



Shelving units can be designed and installed at any height.

Recommended 1880mm height for static units



Height is measured from the floor to the top of post
Recommended 1750mm height for trolley units, including the castors

We will recommend the most appropriate shelving size for your storage room based on the above widths, lengths and heights. This will depend on the size of the room, your storage requirements and the items being stored. There may be various sized shelving and trolley units designed in one room to maximise the space

Chrome wire baskets

- Versatile baskets to replace the traditional plastic bin
- Dust falls through wire to keep products clean and dust free
- Unique soft edged design - won't damage sterile stock and reduces potential hazards to employees
- Close mesh panels on mini, small and medium sizes prevents small items falling out
- Various styles: maxi baskets, bed/recovery baskets, catheter baskets
- Store consumables, stock, PPE equipment, medical supplies, patient files, documents and other items
- Install on louvre panels on wall, inside cupboards, on beds, carts, stack on top of one another or install above benches



MOUNTING ON LOUVRE PANELS

The table below shows an overview of how many NSC chrome wire baskets can be attached to louvre panels

	Mini maxi basket				Small maxi basket			Medium maxi basket		Large maxi basket	Extra large maxi basket	Recommended Configuration		
	1	2	3	4	1	2	3	1	2	1	1	SML	SML	SML
457mm	5	6	7	8	4	5	6	3	4	2	2	SML	SML	SML
	9	10	11	12	7	8	9	5	6	3	3	MED		MED
	13	14	15	16	10	11	12	7	8	4	4	MED		MED
	17	18	19	20	13	14	15	9	10	5	5	LRG		
914mm	21	22	23	24	16	17	18	11	12	6	6	LRG		
	25	26	27	28	19	20	21	13	14	7	7	X-LRG		
	29	30	31	32	22	23	24	15	16	8	8	X-LRG		
	33	34	35	36	25	26	27	17	18	9	9	X-LRG		
1372mm	37	38	39	40	28	29	30	15	16	8	8	X-LRG		
	41	42	43	44	31	32	33	17	18	9	9	X-LRG		
	45	46	47	48	34	35	36	17	18	9	9	X-LRG		
	49	50	51	52	31	32	33	15	16	8	8	X-LRG		
1829mm	53	54	55	56	34	35	36	17	18	9	9	X-LRG		
	57	58	59	60	31	32	33	15	16	8	8	X-LRG		
	61	62	63	64	34	35	36	17	18	9	9	X-LRG		
	65	66	67	68	37	38	39	19	20	10	10	X-LRG		

* Note: Chrome wire catheter baskets small horizontal and large horizontal are similar to small maxi basket.

Vertical catheter baskets can fit 2 across on 914mm and 1829mm louvre panels.

Speak with a NSC representative before purchasing

Mini CCWB-08-M baskets are not recommended on wire wall panels

CHROME WIRE MAXI BASKETS



CCWB-08-M
Mini
155x95x90mm



CCWB-20-M
Small
225x135x125mm



CCWB-30-M
Medium
235x205x160mm



CCWB-40-S
Large
250x420x160mm



CCWB-60-S
Extra Large
400x420x210mm

CHROME WIRE BED/RECOVERY BASKETS



CCWB-15-S
Small wide
150x300x130mm



CCWB-35-S
Medium wide
150x500x130mm



CCWB-55-S
Small tall
150x350x250mm



CCWB-65-S
Large tall
150x500x250mm

CHROME WIRE CATHETER BASKETS



CCWB-25-S
Small horizontal
400x130x135mm



CCWB-70-S
Large horizontal
600x130x135mm



CCWB-80-S
Vertical
150x130x600mm

BASKET ACCESSORIES



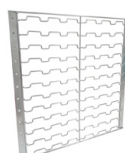
Metal louvre panel
CCWB-PAN-SMS
457 x 457mm

CCWB-PAN-SM
457 x 914mm



Plastic louvre panel
CCWB-PAN-S
460 x 460mm

CCWB-PAN-XS
460 x 157mm



Wire wall panel
CCWB-PAN-CW
460 x 460mm



Dividers for baskets
CCWB-DIV-S (for 40-S)
CCWB-DIV-S-XL (for 60-S)
CCWB-DIV-BB-W
(for 15-S, 35-S)
CCWB-DIV-BB-H
(for 55-S, 65-S)



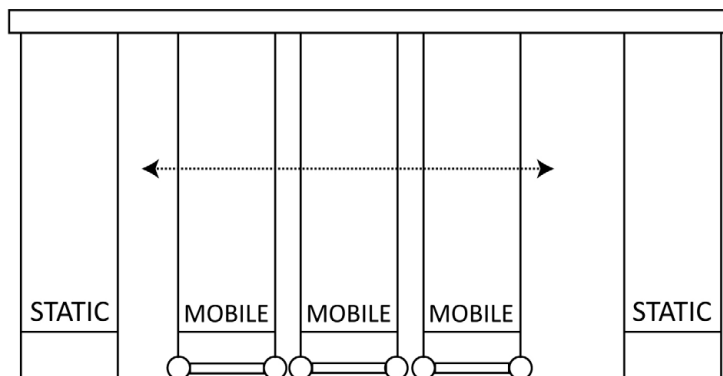
Stacking frames
CCWB-20-FR (for 20-M)
CCWB-30-FR (for 30-M)
CCWB-40-FR (for 40-S)
CCWB-60-FR (for 60-S)
CCWB-70-FR (for 70-S)

Compactors



Compactors increase storage space by up to 40%

- Overhead rails allow mobile shelving to move along tracks
- Custom built for each storage area
- Ideal for storing goods in areas with space restrictions
- Streamlined movement, even with large or bulky goods
- Versatile system - can be built up to 12m long
- Longer spaces can have multiple compactors built



Compactor height = 2100mm

A compactor is made up of various sized shelving units (bays) which move along a top track.

Includes 2 (or 3) static units - one on each end (for longer units there may be a static unit in the middle).

The size of the area will determine the number of mobile bays, these bays move side-to-side for access on both sides

Compactor length = any size to suit store room



Compactors are versatile systems that can be made to any length



How we support you

CAD DESIGNED DRAWING

NSC offers a free design consultation to ensure we meet your site requirements and provide a customised shelving solution. CAD drawings demonstrate the correct scale and size for the storage area.

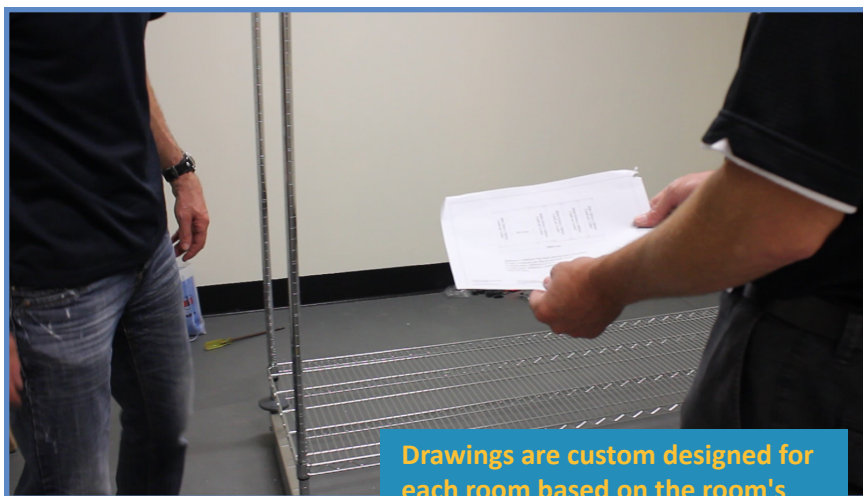
This enables both the customer and NSC to determine the best solution for the site and allows maximum use of space.

Whatever the size or shape of the room, NSC can layout the design with the correct measurements and room shape.

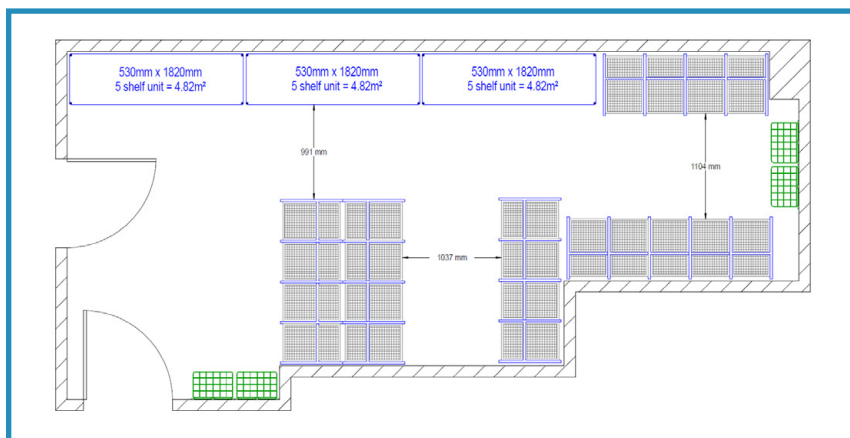
Rooms can be measured during the initial site visits with your hospital or we can work from architects and builders plans.

The visualisation of the CAD drawing assists during the decision making process and allows those within the organisation to view the proposal even if they are unknown to the site. This is helpful in the healthcare industry where many departments are involved in the approval process.

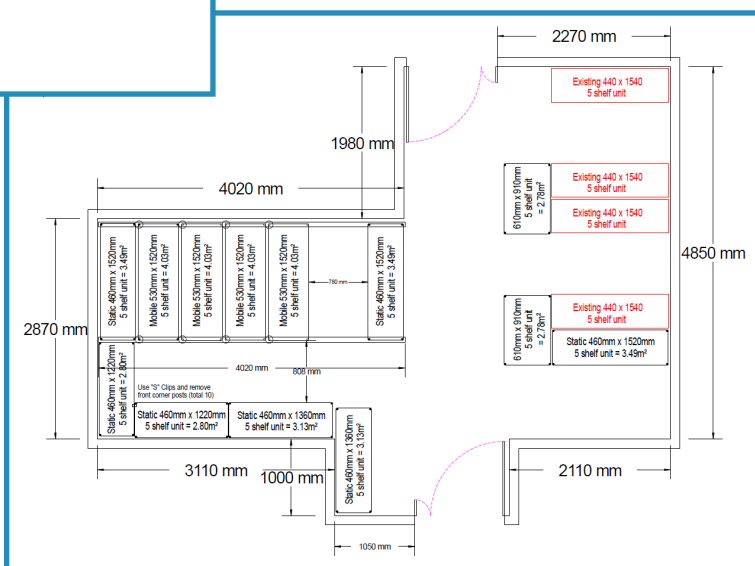
The drawings show square metre sizes to accurately show the benefit of the proposed design versus current system.



Drawings are custom designed for each room based on the room's storage requirements utilising the most appropriate storage systems



Our drawings outline the square meterage of the area and shows each storage solution in different colours



This drawing shows a mixture of compactors, static shelving units, trolleys and existing units

INSTALLATION

The NSC Storage & Shelving division has experienced installers that oversee the delivery and installation of storage projects to hospitals and other customers throughout Australia.

Our installers communicate with hospital personnel and ensure that rooms are built to specification and that the shelving units are installed correctly to the drawing specifications and quotations.

With large shelving and storage projects, NSC recruits local qualified installers to assist in the installation and delivery of the project.

NSC installers are all accredited with the relevant construction industry qualifications (such as General Induction or white cards) in all states they operate in to allow us to meet OH&S requirements on construction sites.



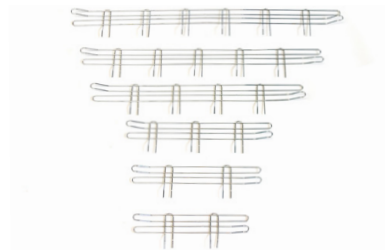
Our installers ensure that your project is delivered and installed as per the quotation and drawing specifications



Accessories

LEDGES

Ledges can be mounted to the side, rear or front of the shelf to stop items falling off. These are available in 100/300mm heights



Ledges ensure that items don't fall off



Code	Ledge description	Code	Ledge description
CL460	460mm x 100mm side ledge	CLH460	460mm x 300mm side ledge
CL530	530mm x 100mm side ledge	CLH530	530mm x 300mm side ledge
CL610	610mm x 100mm side ledge	CLH610	610mm x 300mm side ledge
CL760	760mm x 100mm side ledge	CL760	760mm x 300mm side ledge
CL910	910mm x 100mm front ledge	CLH910	910mm x 300mm rear ledge
CL1070	1070mm x 100mm front ledge	CLH1070	1070mm x 300mm rear ledge
CL1220	1220mm x 100mm front ledge	CLH1220	1220mm x 300mm rear ledge
CL1360	1360mm x 100mm front ledge	CLH1360	1360mm x 300mm rear ledge
CL1520	1520mm x 100mm front ledge	CLH1520	1520mm x 300mm rear ledge
CL1820	1820mm x 100mm front ledge	CLH1820	1820mm x 300mm rear ledge

HANDLES

Handles can be installed on trolleys and mobile bays of compactors to allow fluid movement



CHB trolley handles



Trolley handle
(part of the post)

Code	Description
CHB460	460mm trolley handle
CHB530	530mm trolley handle
CHB610	610mm trolley handle
CN-handle railing 460	460mm 'U' shape handle
CN-handle railing 530	530mm 'U' shape handle
CN-handle railing 610	610mm 'U' shape handle

SHELF DIVIDERS

Dividers fit on to shelf from front to rear to divide and improve organisation



Code

Divider description

CSD460	460mm x 200mm divider
CSD530	530mm x 200mm divider
CSD610	610mm x 200mm divider

SNAKE FRAMES

Snake frames can be installed and the base or top a shelving unit to provide support when there is 1 or 2 shelves installed at one end. Snake frames will be installed at the opposite end



Code

Description

CHR-460	Snake Frame - 460mm
CHR-530	Snake Frame - 530mm
CHR-610	Snake Frame - 610mm
CHR-760	Snake Frame - 760mm
CHR-910	Snake Frame - 910mm
CHR-1070	Snake Frame - 1070mm
CHR-1220	Snake Frame - 1220mm
CHR-1360	Snake frame - 1360mm
CHR-1520	Snake Frame - 1520mm
CHR-1820	Snake Frame - 1820mm

LABEL HOLDERS

Clear scan label holders come in long strips which can be cut down to size to suit stored items. Label holders with clips to attach to shelf or basket are also available. Printed barcodes, labels and stock identifiers can be easily inserted into the label holders.



Label holders can incorporate barcodes, item descriptions and codes



C SBF26CL1200/914
Label holder -clear scan,
cut to size

C LHOL-SML
Label holder
with clip 5 x 3cm

C LHOL-LRG
Label holder
with clip 7.5 x 3.4cm

Code	Label description
C SBF26CL1200	Clear scan label holder 1200mm
C SBF26CL914	Clear scan label holder 900mm
C LHOL-SML	Small label holder with clip - 5x3.5cm
C LHOL-LRG	Large label holder with clip - 7.5x3.4cm
C LABEL CLIPS	Clear scan label clips

PERSPEX SHELF INLAYS

Perspex shelf inlays (2mm thickness) can be placed on top of wire shelves to protect fragile goods such as fluids. Perspex shelves can be removed for cleaning and wipe downs. Built to shelf size. Can be installed on 1 or multiple shelves



CHROME WIRE BASKETS

See [Page 8](#) for chrome wire baskets range. Baskets can be placed side-by-side on the shelves of all chrome wire shelving, trolleys and compactors and rear-to-rear on compactor mobile bays to access the stock on both sides.



Installing accessories on your shelving unit, trolley or compactor can vastly improve the organisation of your stock. This allows for better stock rotation and reduces potential personnel time looking for items

NSC GUARANTEE

Unsure exactly what you need?

An NSC Account Manager can assist you in detailing potential quantities.

Although, any accessory that is ordered and not required can be returned and credited.

All shelving accessories are easy to install, however, NSC can arrange for an installer to assist you with this if required.



Pegasus high density storage

The high density modular storage systems range includes racks, cabinets and carts which all incorporate the interchangeable module system.

The entire system is based on the ISO standard 60x40 and the modules have been designed on this basis.

The modular systems are available as standard units or are custom designed and built using various rack, cabinet or cart options to suit your storage parameters.

These modular systems are ideal for storing, organising and transporting theatre consumables, CSSD sterile stock, medicines, pharmacy bottles, anaesthetics, sutures and small consumables

Why use the Pegasus high density modular system:

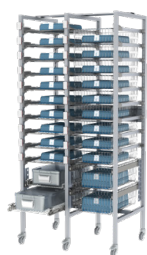
- Maximise storage capacity and organisation
- Reduce overall inventories through stock rotation
- Improve the aesthetics of your storage area
- Reduce potential OH&S risks by the ability to move modules to various levels as required
- Fully customise the area to suit your needs

High density basket storage systems are ideal for:

- Any hospital department or healthcare facility
- Theatre, CSSD, wards, store rooms
- Day surgery
- Anaesthetics store rooms
- Medication store rooms
- Suture trolleys or carts
- ICU/ HDU/ Emergency departments
- Pharmaceutical manufacturer or pharmacy department



PEGASUS HIGH DENSITY STORAGE RANGE



Echidna racks



Open frame racks



Underbench racks



Underbench cabinets



Cabinets



Echidna carts



Hermes case carts



Apollo carts



Salus carts



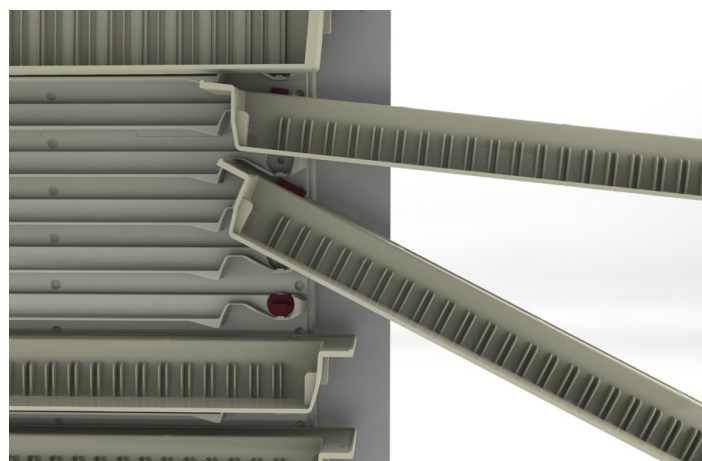
Ecoline carts

HOW THE SYSTEM WORKS



The entire Pegasus high density modular storage system is based around the uniquely designed **side panels** or **rails** and **interchangeable modules** (baskets, trays and shelves).

The units are designed in either **E (600mm wide)** or **U (400mm wide)** configurations and **additional 'bays' can be added** to suit the storage area.



The **Tilt side panels** are installed on the wall of the cabinet, Hermes or Apollo cart and allows the modules to be placed at various levels.

The Tilt side panels allow 9 horizontal insertions and either gently or steeply (116°) tilts when pulled out, depending on the position of the stop clip.

Modules for Pegasus range

MODULES (BASKETS, TRAYS, SHELVES)

All modules are designed to fit in either an E or U style unit



B104060
Basket - 60x40x10cm



B204060
Basket - 60x40x20cm



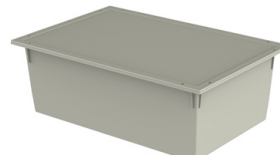
T054060
Tray - 60x40x5cm



T104060
Tray - 60x40x10cm



T204060
Tray - 60x40x20cm



L4060
Lid for tray & basket



T053040
Tray half size - 30x40x5cm



T103040
Tray half size - 30x40x10cm



T203040
Tray half size - 30x40x20cm



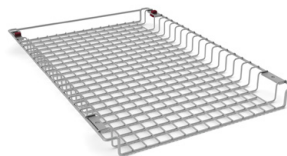
B103040
Basket half size - 30x40x10cm



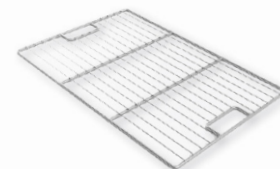
W-B104060
Basket chrome wire
60x40x10cm



W-B204060
Basket chrome wire
60x40x20cm



WS-INSTR
Instrument shelf chrome wire
60x40cm
(also available in stainless steel)



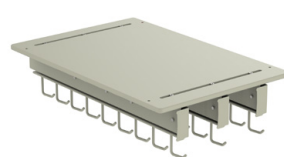
SSS-6040WH
Flat shelf Stainless steel wire
60x40cm



WS-B104060-SS-WH
Basket stainless steel wire
60x40x10cm



WS-B204060-SS
Basket stainless steel wire
60x40x20cm



CATHH-E/U + CATH-SHELF-E/U
Retractable catheter hooks
with shelf - E or U



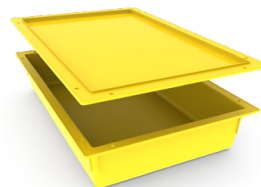
CATHBX-E/U
Retractable catheter box
E or U



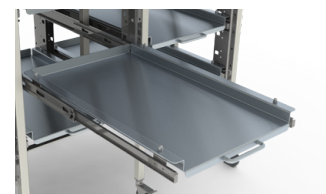
T104060-ND-HR
Tray sterile high resistance -
60x40x10cm



T204060-HR
Tray sterile high resistance -
60x40x20cm



L4060-HR
Lid for sterile high
resistance tray



SS-U-CON-SHELF
Container shelf solid
stainless steel



T104060-AM
Tray antimicrobial -
60x40x10cm



T204060-AM
Tray antimicrobial -
60x40x20cm



SHLF-MEL
Melamine shelf - 60x40cm



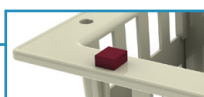
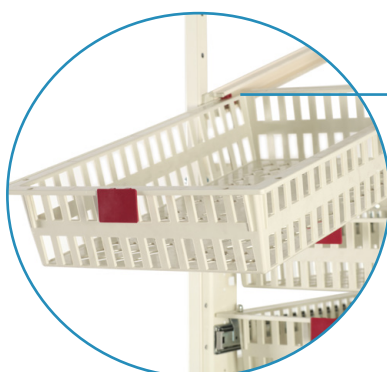
SHELF-HPL
High pressure laminated (HPL)
shelf - 60x40cm

MODULE DISPLAY

The modules are inserted into **plastic side rails** (racks, carts); **telescopic slides** (for heavy loads); or **Tilt side panels** affixed to the wall of cabinets, Apollo carts.

Plastic side rails allow modules to be placed at **horizontal** or **angled** positions. These rails can be moved at various heights, without tools, and baskets can be viewed on an angle without falling out.

UNIQUE SAFETY BASKET STOP

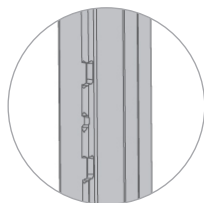


The modules are a retractable system which have a unique safety-stop function which prevents the module from accidentally falling out when pulled or viewed on an angle.



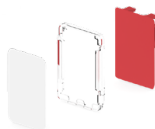
Echidna racks

SEALED STRUCTURE



The Echidna rack is a completely sealed system, there are no open holes within the frames, therefore, all surfaces can easily be cleaned

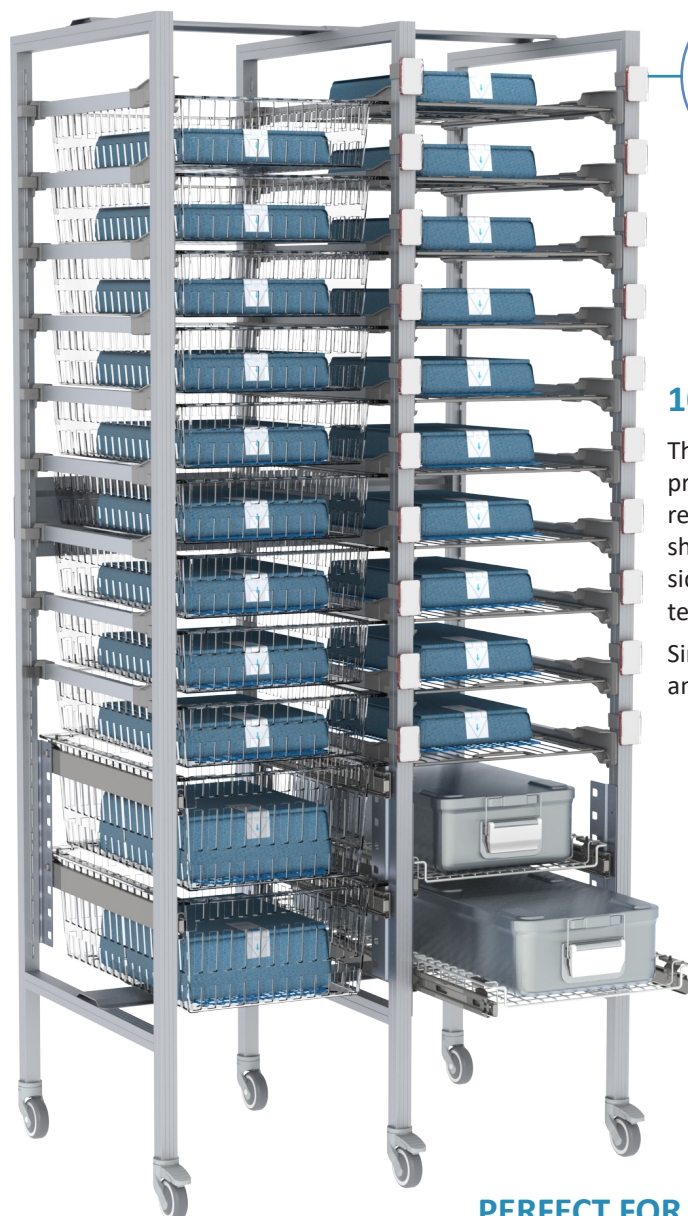
LABELLING SYSTEM



Labels can be clicked into the frame and remain in position, even if the tray or basket is removed. Labels can include covers to protect any printed labels

MATERIALS

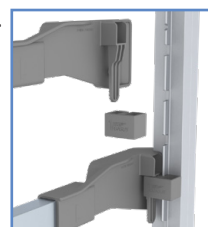
The entire system is made of powder-coated aluminium



100% MODULAR

This completely modular system provides tool free, easy, reconfiguration of basket and shelf levels, both for standard side rails and heavyweight telescopic slides.

Simply click off and on



CUSTOMISE

Racks can have multiple 'add-on' bays for a wider unit

INSTANT ASSEMBLY

Easily install and modify as required to suit different storage parameters

PERFECT FOR CSSDs

Horizontal rails with wire shelves and baskets are ideal for holding sterile instrument trays and packs.

Reduce OH&S issue with personnel and protect sterile packs

See PAGE 50 for more information about how this works with the NoTouch™ system

OPTIONS FOR MODULE DISPLAY

HORIZONTAL RAILS

Baskets can be pulled and viewed on a tilt without falling (up to 5kg)

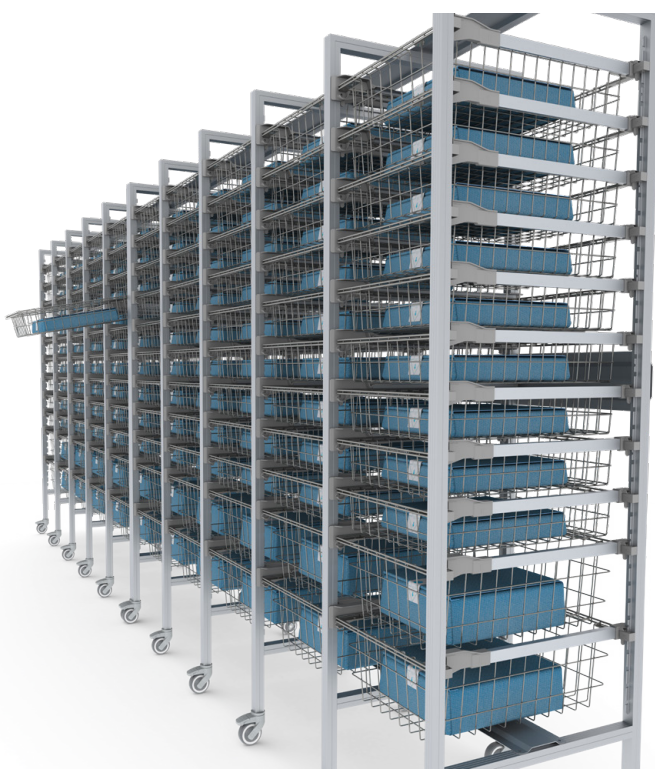
TELESCOPIC SLIDES

Echidna racks can be equipped with telescopic slides (for loads over 10kg)



CATHETER RACKS/HOOKS

To securely and safely store catheters



CUSTOM DESIGNED

Echidna racks are custom designed and built to your requirements.

Multiple add-on bays, modules, shelves, castors and accessories are included to suit the storage area

SPACE SAVING = INCREASED STORAGE

Baskets are fully retractable - no gaps needed between the baskets, no space is wasted

IMPROVED ORGANISATION

Clear line of sight + easy and ergonomic access to all baskets at the higher levels

Echidna carts

The Echidna cart is lighter than most steel carts, flexible and easily manoeuvrable. It is built with an aluminium structure, HPL top working surface and dual push handles

Features:

- Aluminium frame and castors
- Lightweight and versatile
- Single or double carts
- Sealed structure: no growth of bacteria inside the profiles
- 99cm wide stable working surface
- Easy to clean

Can be used in various hospital departments:

- Hospital theatre
- CSSD
- Set up trolley
- Store rooms
- Emergency Dept
- Wards
- Day Surgeries
- Clinics



HYG-CRT98-UU
Echidna cart double U
690 x 990 x 1060mm



HYG-CRT98-E
Echidna cart single E
490 x 740 x 1060mm

Echidna carts are ideal for transporting consumables and tray sets around hospital departments including between theatre and CSSD

The Echidna open cart is ideal for handling and transporting sterile trays, packs, consumables and containers between CSSD and theatre

This lightweight cart can be used as a clean or dirty cart combining a range of modules including flat wire shelves, high resistance trays, or ABS cream baskets. Available in single or double carts

Echidna open storage carts with yellow high resistance modules or antimicrobial green trays can be used for transportation of used, contaminated instruments, trays and equipment from theatre back to CSSD.

Echidna open storage carts with sterile trays and packs can be used in sterile environments and “clean” corridors between CSSD, CSSD store rooms and theatre set up



HYG-CRT160-2-OP
Echidna open cart double
690 x 1063 x 1560mm



HYG-CRT160-1-OP
Echidna open cart single
690 x 620 x 1560mm

* width includes handles

All sizes are DxWxH

Open frame racks

VERSATILE

- Plastic rails can be re-positioned without tools
- Flexible divider system

CUSTOMISE

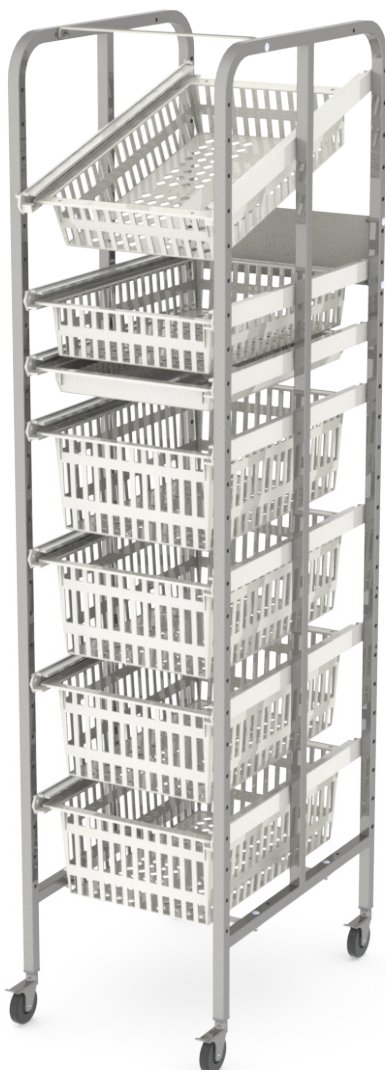
Racks can have multiple 'add-on' bays for a wider unit

DURABLE

- Strong and sturdy
- 40kg load capacity
- Tubes are galvanised & powder-coated to prevent rusting

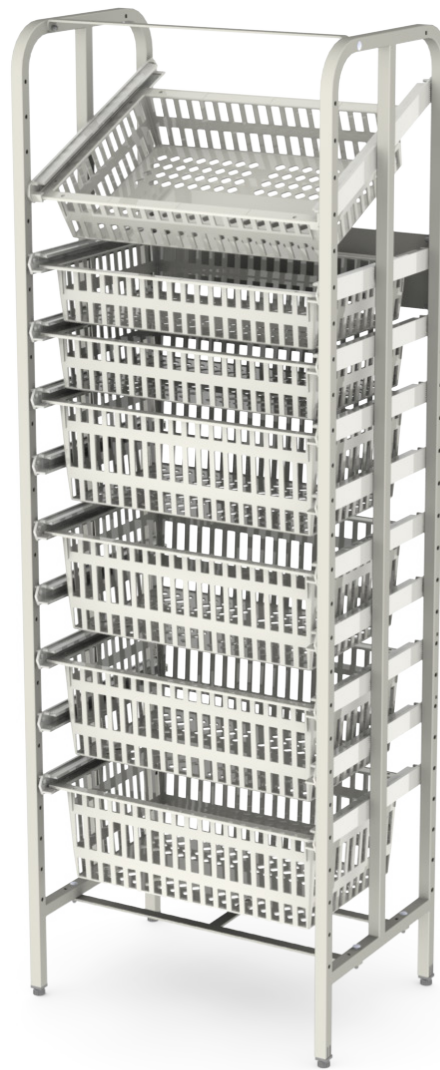
HYGIENIC

Smooth and easy-to clean surfaces



U type

400mm front and 600mm deep



E type

600mm front and 400mm deep

OPTIONS FOR MOVEMENT

Available with feet (1935mm height) or mobile with castors (1988mm height).

Castors allow racks to be moved for cleaning

STABILITY

Stable construction with cross-support rear, top and bottom

OPTIONS FOR MODULE DISPLAY

ANGLED RAILS

Fixed rails for top access.

Baskets can be viewed on an angle without falling, even when pulled out

HORIZONTAL RAILS

Baskets can be pulled and viewed on a tilt without falling (up to 5kg).

Optional “click-in” wheels for smoother basket sliding (5-10kg)

TELESCOPIC SLIDES

To be used with baskets heavier than 10kg.
100% extension



CATHETER RACKS/HOOKS

To securely store catheters

Pegasus racks with ABS baskets are perfect for consumables and sterile stock storage



Ecoline hospital carts

HYGIENIC

Smooth & easy-to-clean surfaces

SECURE

Supplied with a key lock as standard

HIGH QUALITY

Powder coated steel with ABS drawers, wall bumpers and top surface

IMPROVE ORGANISATION

Ability to remove modules from drawers allows for easier re-stocking and re-placement

ERGONOMIC

Retractable, soft close drawers

SAFE

High quality, smooth running extended wheels to ensure the cart's stability even when drawers are pulled out

BROCHURE



Ask us for the Ecoline cart brochure for detailed information on the range

See PAGE 38 for Ecoline cart accessories

ECOLINE PROCEDURE CART



CRT-M35-PRO3
560 x 770 x 870mm



CRT-M39-PRO1
560 x 770 x 985mm



CRT-M43-PRO2
560 x 770 x 1100mm

ECOLINE EMERGENCY CART



CRT-M35-PRO3
560 x 770 x 870mm



CRT-M39-PRO1
560 x 770 x 985mm



CRT-M43-PRO2
560 x 770 x 1100mm



CRT-M39-PAED1/PAED2
Paediatric emergency cart
560 x 770 x 985mm (PAED1)
560 x 770 x 1100mm (PAED2)

Ecoline hospital carts

ECOLINE ANAESTHETIC CART



CRT-M35-ANS3
560 x 770 x 870mm



CRT-M39-ANS1
560 x 770 x 985mm



CRT-M43-ANS2
560 x 770 x 1100mm

ECOLINE ISOLATION CART



CRT-M35-ISO3
560 x 770 x 870mm



CRT-M39-ISO2
560 x 770 x 985mm



CRT-M43-ISO1
560 x 770 x 1100mm

See PAGE 38 for
Ecoline cart accessories

ECOLINE MEDICATION CART



CRT-M39-MED1
560 x 770 x 985mm



CRT-M43-MED2
560 x 770 x 1100mm

ECOLINE NARROW CARTS & DOUBLE CART



CRT-NM43KL-444448
560 x 470 x 1120mm

CRT-NM39KL-44448
560 x 470 x 1000mm

CRT-NM35KL-4448
560 x 470 x 890mm



CRT-MUU39-44448
760 x 1040 x 1040mm

ENVIRONMENTALLY FRIENDLY

Made from 100% polymer which can be recycled

LIGHTWEIGHT & RIGID

Great rigidity even with its lightweight design

ANTIMICROBIAL

100% antimicrobial is perfect for hospital environments

PUSH HANDLE

Easily manoeuvre cart with integrated handle

PROTECTION

360° wrap around bumper protects cart and walls

COLOUR OPTIONS

Cart sides, back and drawers available in solid colours (red, blue) or handle colours only

WASHABLE

Polymers can be easily cleaned and washed without the risk of rust and corrosion

MODULAR

Can be built with various drawer combinations in 5cm, 10cm and 20cm heights



See PAGE 38 for
Polycart accessories

POLYCART OPTIONS



PLY36-4449-BB
580x840x920mm



PLY41-44449-BB
580x840x1040mm



PLY46-444449-BB
580x840x1170mm



PLY36-4449-RR
580x840x920mm



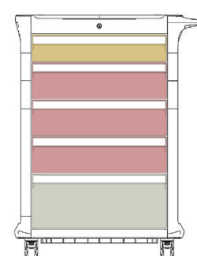
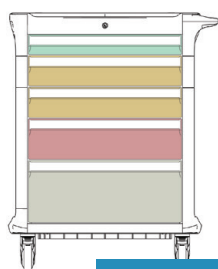
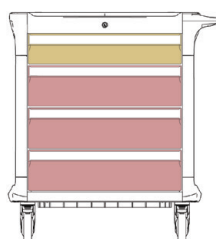
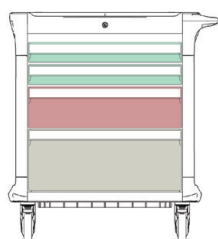
PLY41-44449-RR
580x840x1040mm



PLY46-444449-RR
580x840x1170mm



Also available with
yellow or white handles



Polycarts feature multiple drawer configuration options

Apollo storage carts

HEIGHT OPTIONS

Cart heights available:
1090mm, 1470mm,
1840mm, 2090mm

WIDTH OPTIONS AVAILABLE

Available in single, double or
triple cart widths in E (600mm)
or U (400mm) styles

DOOR STYLES

Different doors
available: open/
no door, tambour,
glass, solid

PROTECTION

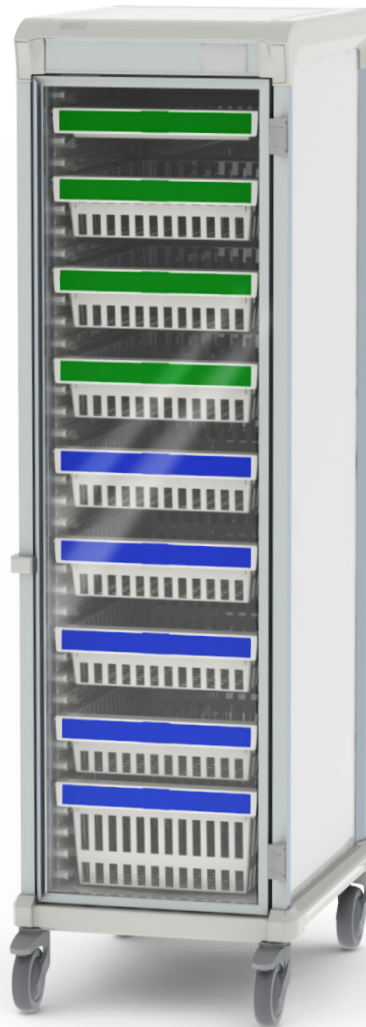
Full 360°
wrap-around bumper



E type

HYGIENIC

- All surfaces are made of polymers,
resistant to moisture
- ABS top cover, PP floor,
PVC exterior walls



U type

SAFETY

Castors are extended
to provide increased stability

STREAMLINED MOVEMENT

Smooth-running medical grade,
non-marking rubber castors
(2 x swivel, 2 brake - front)

See PAGE 38 for
Apollo cart accessories

OPEN (NO DOOR) CARTS



APL-4.0UUU-ND
Triple U



APL-4.0E-ND
Single E



APL-4.0U-ND
Single U



APL-2.0UU-ND
Double U

Code	Width	Depth	Height
APL-2.0E-ND	750mm	530mm	1090mm
APL-2.0EE-ND	1460mm		
APL-2.0U-ND	550mm	730mm	
APL-2.0UU-ND	1060mm		
APL-3.0E-ND	750mm	530mm	1470mm
APL-3.0EE-ND	1460mm		
APL-3.0U-ND	550mm	730mm	
APL-3.0UU-ND	1060mm		
APL-4.0E-ND	750mm	530mm	1840mm
APL-4.0EE-ND	1460mm		
APL-4.0U-ND	550mm	730mm	
APL-4.0UU-ND	1060mm		
APL-4.0UUU-ND	1570mm		

TAMBOUR, ROLLING DOOR CARTS



APL-4.0E-TD
Single E



APL-4.0UU-TD
Double U style



APL-3.0UU-TD
Double U



APL-2.0E-TD
Single E

Code	Width	Depth	Height
APL-2.0E-TD	750mm	530mm	1090mm
APL-2.0EE-TD	1460mm		
APL-2.0U-TD	550mm	730mm	
APL-2.0UU-TD	1060mm		
APL-3.0E-TD	750mm	530mm	1470mm
APL-3.0EE-TD	1460mm		
APL-3.0U-TD	550mm	730mm	
APL-3.0UU-TD	1060mm		
APL-4.0E-TD	750mm	530mm	1840mm
APL-4.0EE-TD	1460mm		
APL-4.0U-TD	550mm	730mm	
APL-4.0UU-TD	1060mm		
APL-4.0UUU-TD	1570mm		

GLASS DOOR CARTS



APL-4.0EE-GD
Double E style



APL-4.0U-GD
Single U style



APL-2.0E-GD
Single E



APL-3.0UU-GD
Double U

Code	Width	Depth	Height
APL-2.0E-GD	750mm	530mm	1090mm
APL-2.0EE-GD	1460mm		
APL-2.0U-GD	550mm	730mm	
APL-2.0UU-GD	1060mm		
APL-3.0E-GD	750mm	530mm	1470mm
APL-3.0EE-GD	1460mm		
APL-3.0U-GD	550mm	730mm	
APL-3.0UU-GD	1060mm		
APL-4.0E-GD	750mm	530mm	1840mm
APL-4.0EE-GD	1460mm		
APL-4.0U-GD	550mm	730mm	
APL-4.0UU-GD	1060mm		
APL-4.0UUU-GD	1570mm		

See PAGE 38 for
Apollo cart accessories

SOLID, HINGED DOOR CARTS



APL-2.0UU-SD
Double U



APL-4.0EE-SD
Double E



APL-4.0UU-SD
Double U



APL-4.0E-SD
Single E

Code	Width	Depth	Height
APL-2.0E-SD	750mm	530mm	1090mm
APL-2.0EE-SD	1460mm		
APL-2.0U-SD	550mm	730mm	
APL-2.0UU-SD	1060mm		
APL-3.0E-SD	750mm	530mm	1470mm
APL-3.0EE-SD	1460mm		
APL-3.0U-SD	550mm	730mm	
APL-3.0UU-SD	1060mm		
APL-4.0E-SD	750mm	530mm	1840mm
APL-4.0EE-SD	1460mm		
APL-4.0U-SD	550mm	730mm	
APL-4.0UU-SD	1060mm		
APL-4.0UUU-SD	1570mm		

CATHETER CARTS



Double U with catheter box & hooks



Triple U with catheter hooks

SPECIALTY CARTS



Single U style with high resistance yellow trays



Double U style with antimicrobial green trays (dirty utility cart)



Apollo carts are ideal for storing high value catheters, balloons and stents in catheter labs and medical imaging departments



MAXIMUM CAPACITY OF MODULES IN CART

Module height	Door type	1090mm	1470mm	1840mm
20cm	TD	3	5	7
	GD/SD/ND	3	5	7
10cm	TD	5	8	11
	GD/SD/ND	6	9	12
5cm	TD	8	13	17
	GD/SD/ND	9	13	18

TD - Tambour Door
GD - Glass Door

SD - Solid Door
ND - No Door/open



BROCHURE

Ask us for the Apollo cart brochure for detailed information on the range

Accessories for carts



CRTA-SLSHLF-R
Ecoline ABS plastic gallery top
with right SS pull-out worktop



CRTA-TOPPC-3SGT
Ecoline ABS plastic gallery top



CRTA-IVPOLE-HA
IV pole adjustable
(mounts to rear of cart)



CRTA-BRO-LOCK
Ecoline breakaway/
seal lock



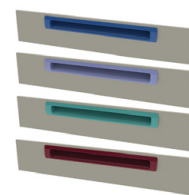
CRTA-MK39/43ELKIT
Electronic combination lock



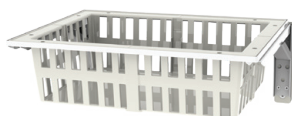
CARBACKB
Cardiac back board
(mounts to rear of cart)



SDIFARM
Defibrillator arm, swivelling



Drawer handle colours:
Beige, white, lavender,
teal, red, dark blue, grey



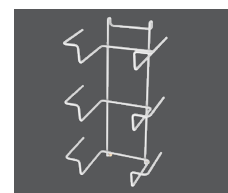
CRTA-SFRAME-FL
Foldable side frame with
basket (B103040)



CRTA-SFRAME-FL
Foldable side frame with
shelf (SHELF-HPL3040)



GLOVEH/CRTA-GLVBX
Glove holder
(requires 1 accessory rail)



CRTA-GLOVBX-3
Glove holder - 3 compartment
(requires accessory rail)



S-GBH-ABS
Glove box holder single
(requires mounting hook
DIN-HKS-GBH-SET)



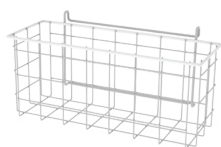
TR-GBH-ABS
Glove box holder triple
(requires mounting hook
DIN-HKS-GBH-SET)



DLBH-PP
Holder for disinfection bottles
(requires mounting hook
DIN-HKS-GBH-SET)



HAZ-BIB-H
Holder for hazard bins
(requires 2 accessory rails)



SBASKET
Multi storage wire basket
(requires 1 accessory rail)



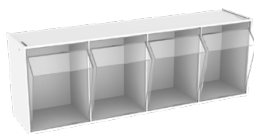
CRTA-ALPH-MK39/43
Push handle aluminium for
Ecoline cart



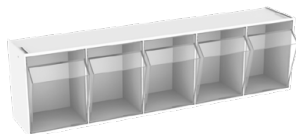
APL-PH-INST-VER-L/R
Apollo cart push handle
vertical



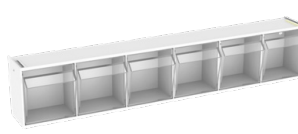
GZ1660
Oxygen tank holder
(requires 1 accessory rail)



TILTBIN-4
Tilt-Bin cassette 4 sections
(requires tilt bin holder)



TILTBIN-5
Tilt-Bin cassette 5 sections
(requires tilt bin holder)



TILTBIN-6
Tilt-Bin cassette 6 sections
(requires tilt bin holder)



RVTTPRAIL-AL/CRTA-TRL-2
Tilt-Bin holder/posts for
2 rows of tilt bins



CRTA-TILTBHLD-3/CRTA-TRL-3
Tilt-Bin holder/posts for
3 rows of tilt bins



WSB-CRT
Waste container with lid
(requires 1 accessory rail)



MED-DWR-80W
Medication cassettes 80mm
(require medication cassette
holder)



Medication cassette holder -
different holders for number
of levels of cassettes



CRTA-CATH-HLD
Side catheter box with
flexiglass front panel
(requires 2 accessory rails)
Lid - APL-CRTA-CATH-LID



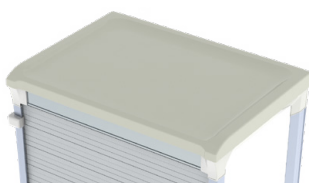
APL-SRAIL-E/U
Apollo cart accessory rail



CRTA-SRAIL-MK39/43
Accessory rail for Ecoline
standard and narrow carts



DWR-FRNT-E-W
Drawer fronts for Apollo carts
5cm, 10cm, 20cm heights



NCRTT-TOP-PC-E/U-VF
VF top cover for Apollo cart
(suited for shorter carts)



PLY-LTH
Laptop arm holder
(Polycart only)



PLY-AIO-HLD
VESA monitor arm holder
(Polycart only)



PLY-HSHLF
Front shelf
(tilt bin posts required
PLY-TBH-2) (Polycart only)



PLY-AIO
All in one arm (Polycart only)



PLY-SSHFL-R/L
Stainless steel shelf heavy load
push to open (Polycart only)

*Codes may slightly vary depending on if the accessory
is used with Apollo cart, Ecoline cart or Polycart*

Hermes case carts

Hermes carts provide a strong and washable cart for transporting sterile and non-sterile instruments and equipment between CSSD and theatre

ALUMINIUM

Rigid, heavy-duty aluminium structure



PROTECTION

All around rubber upper & bottom bumpers

HANDLES

Ergonomic push handles, allow easy movement of cart

270° OPENING

Doors can be opened to 270° and locked with a magnet to the cart's outside walls

HEAVY-DUTY WHEELS

150mm heavy duty castors
2 swivel, 2 locking

SAFETY

Optional hook connection for safe towing



STAINLESS STEEL MODULES

Use with stainless steel shelves and baskets which are able to be placed in a washer

Side and central panels can be removed easily for washing using fast connectors (no tools needed).
Nylon side panels are resistant to heat up to 110° degrees



Double U cart
740x980x1540mm
Code: HAL-3.0UU-PNL



Single U cart
770x510x1620mm
Code: HAL-4.0U-PNL

Salus aluminium transport carts

LIGHTWEIGHT

- Frame is made of high-quality, light weight anodised aluminium
- Rails made from nylon and aluminium

VERSATILE

Plastic rails can be re-positioned without tools. Use with ABS baskets (10cm, 20cm), ABS trays (5cm, 10cm, 20cm), wire instrument trays, flat wire shelves

CLEANABLE

Easily clean and disinfect, no rusting. No future peeling paint

OPEN TOP

Salus carts feature an open top to ensure dust doesn't collect

STABILITY

Stable construction with top and bottom support

EASE OF MANOEUVRABILITY

Push handles allow easy movement around departments



OPTIONS

Various configurations: single or double cart in U or E styles in different heights

SINGLE BAY CARTS



SLS-U-1160
690x570x1130mm



SLS-U-1400
690x570x1370mm



SLS-U-1640
690x570x1640mm



SLS-U-1880
690x570x1880mm

SLS-E-1160
490x770x1130mm

SLS-E-1400
490x770x1370mm

SLS-U-1640
490x770x1640mm

SLS-E-1880
490x770x1880mm

DOUBLE BAY CARTS



SLS-UU-1160
690x1050x1130mm



SLS-UU-1400
690x1050x1370mm



SLS-UU-1640
690x1050x1640mm



SLS-UU-1880
690x1050x1880mm

SLS-EE-1160
490x1450x1130mm

SLS-EE-1400
490x1450x1370mm

SLS-EE-1640
490x1450x1640mm

SLS-EE-1880
490x1450x1880mm

Salus carts are ideal for set up trolleys to transport sterile packs and consumables to theatre. Use coloured handles to quickly identify different procedures/specialties



Salus underbench racks

Fully modular underbench racks and carts

Underbench racks to suit your storage area. Install multiple racks under existing or new benchtops. Combine multiple underbench bays with tall racks to utilise storage area.

Create a clean and dust free environment, racks can be easily accessed underneath for cleaning and benchtops can be disinfected. All Salus underbench racks can be used with any of the Pegasus modules. Maximise storage by installing louvre panels along top of benchtop for chrome wire baskets.



Salus underbench cart

Salus carts feature the same side rail and support frames as the underbench racks.

The heavy duty castors allow the units to be moved around as required then stored in the Salus underbench rack system.



Benchtops

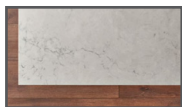
Custom made benchtops can be installed on the underbench frame units



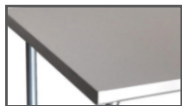
Laminate
25mm



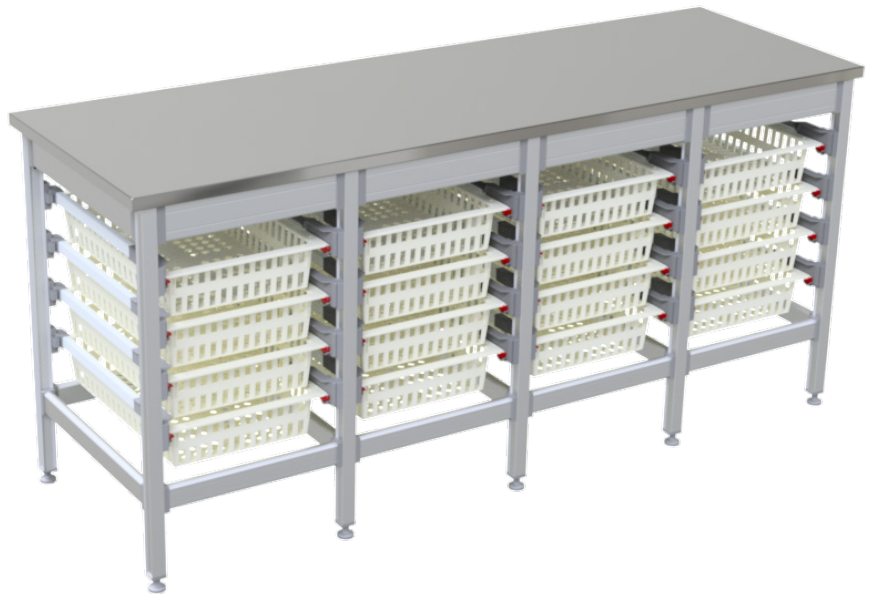
Laminex
compressed laminate
19mm



Stone
20 - 30mm



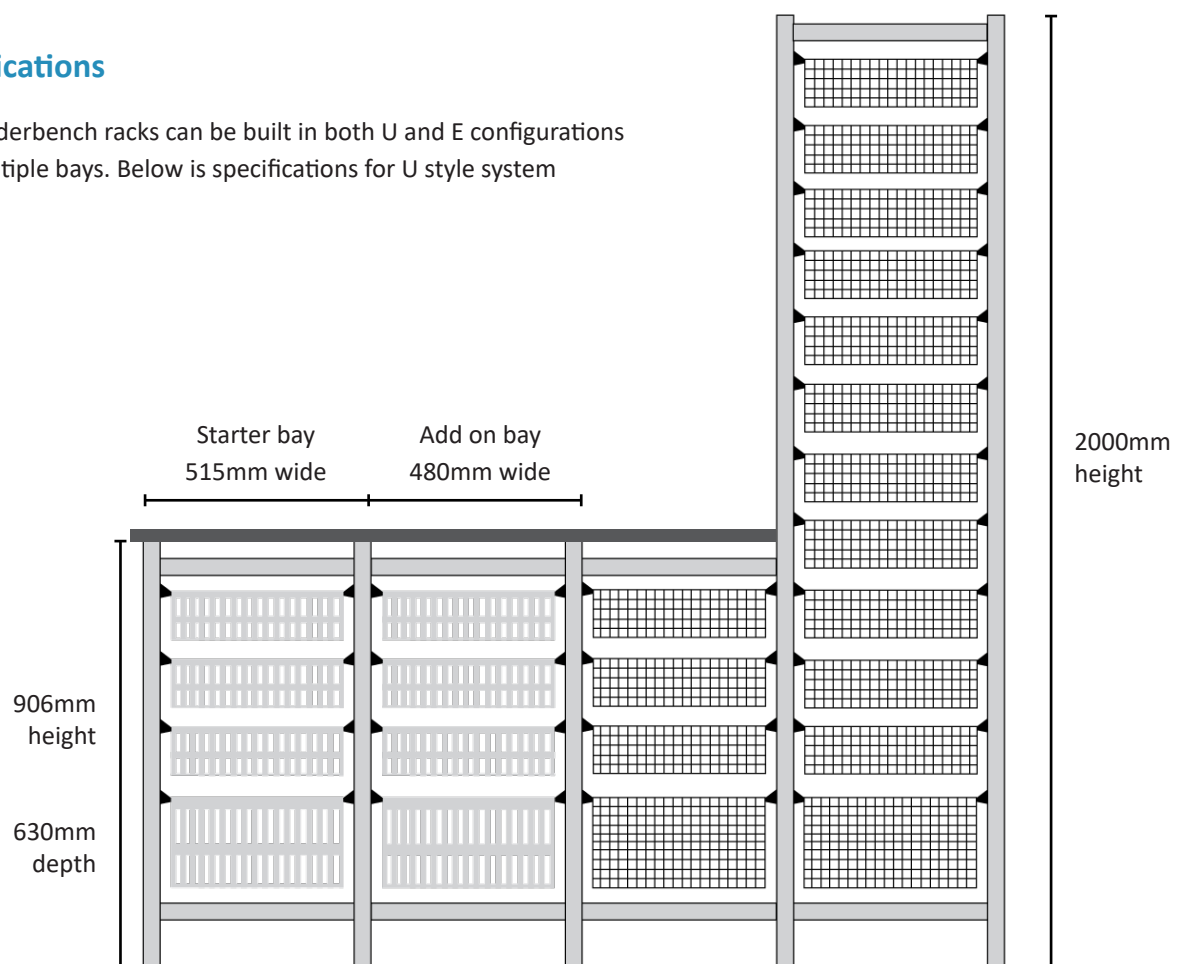
Stainless steel
30mm



Numerous colours and patterns available in all materials

Specifications

Salus underbench racks can be built in both U and E configurations with multiple bays. Below is specifications for U style system



Cabinets

CUSTOMISABLE

Customised cabinets to suit storage area including tall/standard, underbench, wall mounted. Any height/ width variations can be manufactured

HIGH QUALITY

Cabinets are designed & manufactured using high quality hospital grade melamine

ORGANISATION

Ability to combine the KANBAN stock rotation and ordering system



VERSATILE DOOR OPTIONS

Available open/no door or with rolling tambour door, hinged solid door or glass door

COMPLIANCE

Designed to ISO standard, all modules can fit in cabinet

INCREASE STORAGE CAPACITY

Includes ABS side panels as standard however, retractable telescopic slides can be incorporated for heavier loads. Using different modules allows more items to be stored compared to standard shelves

STANDARD/ TALL CABINETS



Standard cupboards can be built up to 2100mm high and any width.

The number of bays is dependent on the width of the storage area and whether U or E configuration is preferred/required

UNDERBENCH CABINETS



CABINETS ON CASTORS

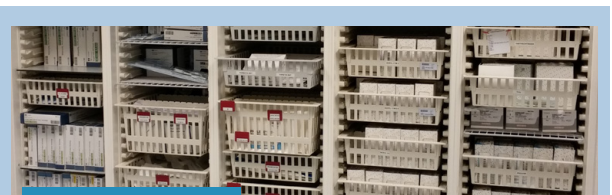


INCREASE STORAGE

The Pegasus underbench cabinets can be made in any height up to 1000mm with various bay add-ons.

Including louvre panels above the bench with NSC chrome wire baskets can also increase storage capacity of the area

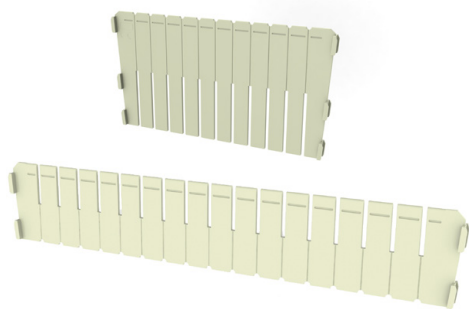
WALL MOUNTED CABINETS



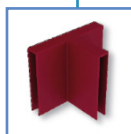
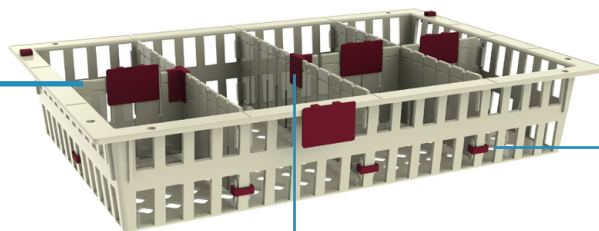
CUSTOM MADE

Cabinets are custom designed to suit the user's requirements. We can work with builders, architects and hospitals to allow cabinets to be designed to meet the ISO standards and enable the Pegasus system to be installed.

Pegasus accessories



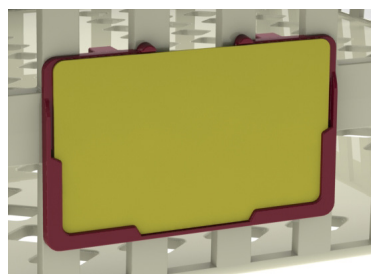
Dividers - short or long
for all modules



T-holder for locking
dividers once snapped
THLDR

Divider lock to keep
secure
DIVLCKS

Code	Divider size/module	Code	Description
D0540	Short for 5cm tray 40x5cm	THLDR	T-holder for dividers
D0560	Long for 5cm tray 60x5cm	DIVLCKS	Divider lock
D1040	Short for 10cm basket 40x10cm & long for half size basket	PNWL-SET	Support wheel for tilt side panel
D1060	Long for 10cm basket 60x10cm		
D2040	Short for 20cm basket 40x20cm		
D2060	Long for 20cm basket 60x20cm		
D1030	Short for half size basket 30x10cm		



Label holder with coloured or
white label plate



Label holder - vertical



Label holder - horizontal



EZ SWIPE card (green/red)

Code	Label holder description	Code	Label holder description
LBLHLD-PPCC	Label holder large - 9x5.5cm	LBLHLD-VER	Label holder vertical - 4x5.7cm
LP-PE-W	Label plate white - 8.6x5.4cm	LBL-VERCOV	Label cover for label holder vertical
LP-PE-PK	Label plate pink - 8.6x5.4cm	LBLHLD	Label holder horizontal - 5.7x4cm
LP-PE-OR	Label plate orange - 8.6x5.4cm	LBL-HORZCOV	Label cover for label holder horizontal
LP-PE-YL	Label plate yellow - 8.6x5.4cm	LBL-EZSWP	EZSWIPE card with case
LP-PE-LGR	Label plate light green - 8.6x5.4cm	LBL-INTR-HYG	Label holder for Echidna racks
LP-PE-DGR	Label plate dark green - 8.6x5.4cm		
LP-PE-DBL	Label plate dark blue - 8.6x5.4cm		
LP-PE-RD	Label plate red - 8.6x5.4cm		



COLOUR CODED HANDLES FOR IMPROVED ORGANISATION

Hospital personnel need to quickly and easily locate supplies for better patient care and efficient operations.

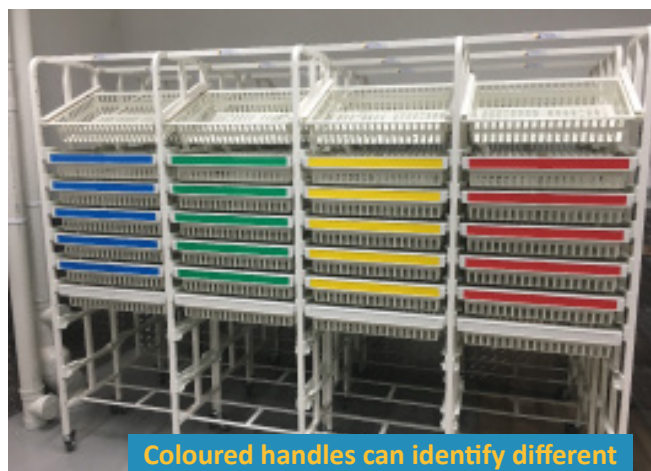
Studies show that nurses spend at least 5-20% of their time on retrieving supplies.

Well-designed and implemented supply storage and inventory management systems can dramatically decrease time spent by nurses on looking for and retrieving supplies.

Incorporating coloured handles can:

- Improve visibility and recognition of stored items
- Colour coded according to department or item type
- Increase nursing satisfaction as time isn't wasted looking for items
- Be adapted to suit your hospital storage requirements
- Easily replace and clip on any basket/tray

Code	Description
LBL-HDL-U-B	Handle U type
LBL-HDL-U-BP	Blue U coloured strip
LBL-HDL-U-GP	Green U coloured strip
LBL-HDL-U-RP	Red U coloured strip
LBL-HDL-U-YP	Yellow U coloured strip
LBL-HDL-E-B	Handle E type
LBL-HDL-E-BP	Blue E coloured strip
LBL-HDL-E-GP	Green E coloured strip
LBL-HDL-E-RP	Red E coloured strip
LBL-HDL-E-YP	Yellow E coloured strip



Coloured handles can identify different departments or item types

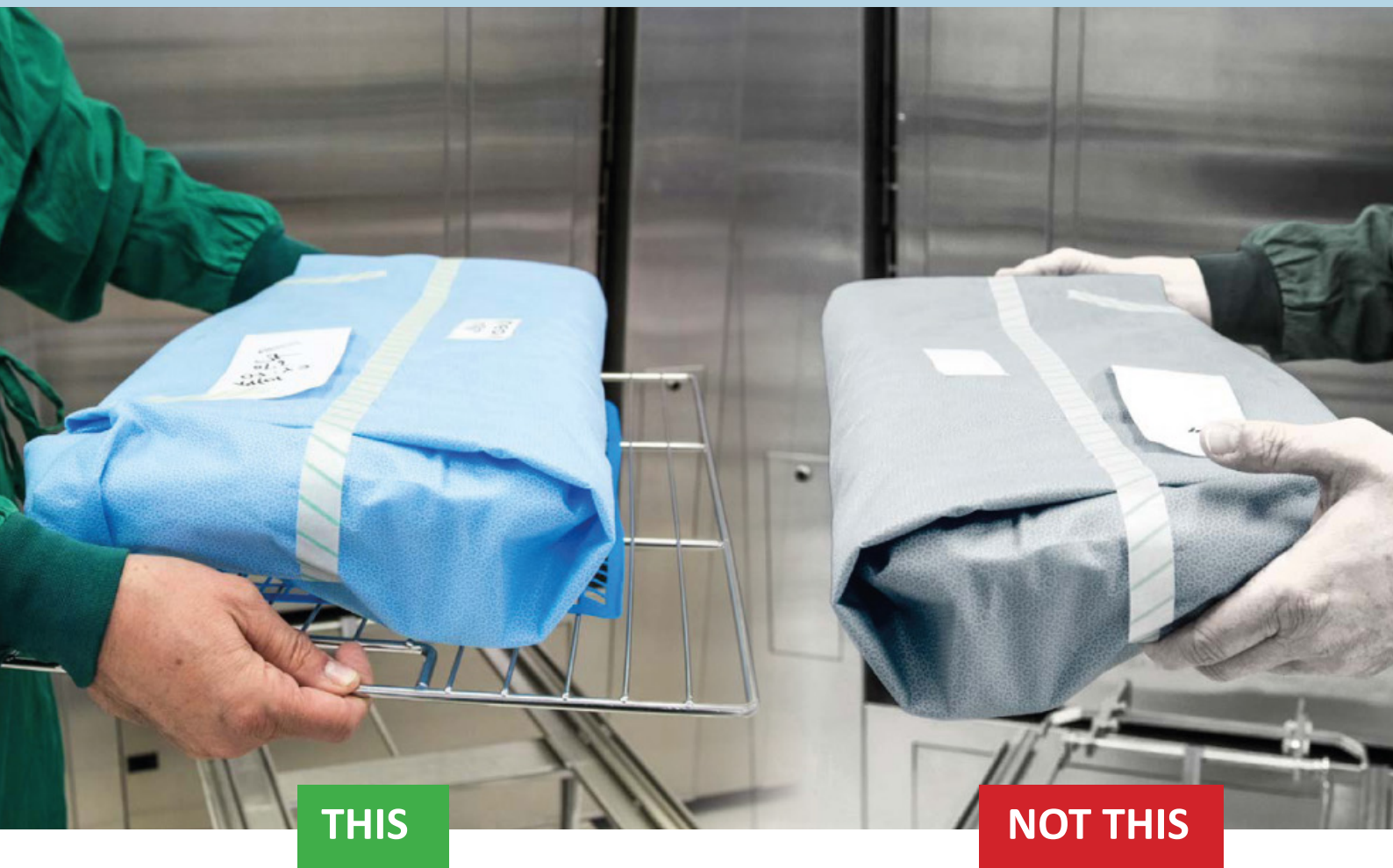


Dividers can create multiple compartments to suit items stored



Label holders easily clip onto any module or divider

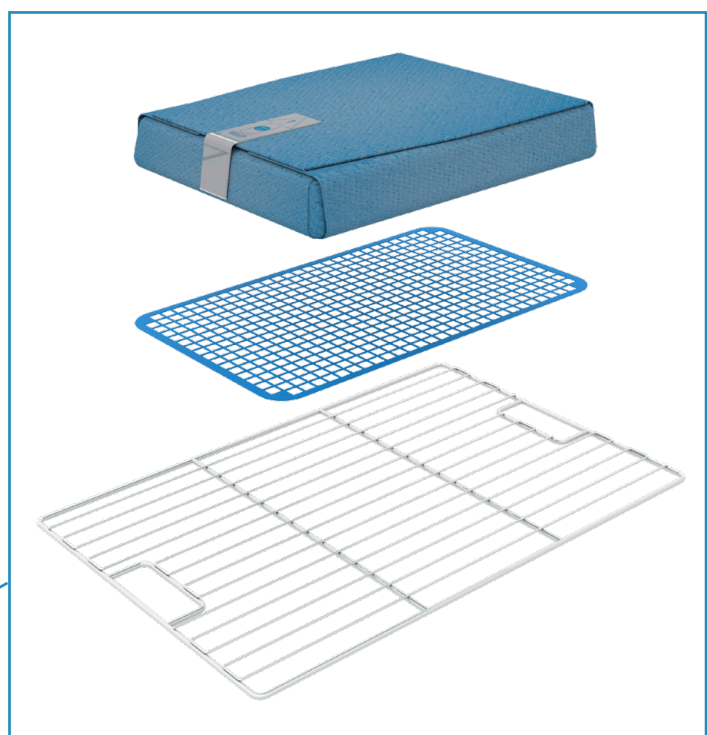
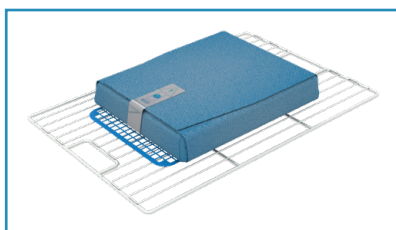
No-Touch™ system



Contamination and tears are a thing of the past with the NoTouch™ system from CSSD to Theatre with virtually no human interference

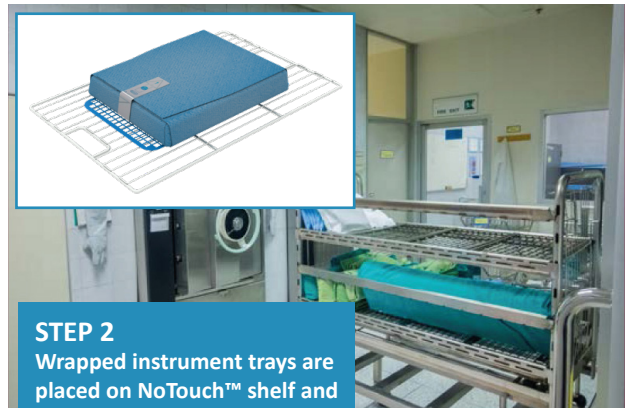
The No-Touch™ system eliminates human interaction during instrument reprocessing thanks to our dedicated ISO Standard Stainless Steel shelves and baskets and the range of open and closed carts and racks

Eliminate contamination and tears during transportation by touching only the carrier shelf, and not the sterile pack





STEP 1
Wrap cleaned
instrument trays



STEP 2
Wrapped instrument trays
are placed on NoTouch™ shelf
and into steriliser (shelf is handled,
pack is not touched)



STEP 3
NoTouch™ shelf (w/sterile pack)
is transported to sterile storage
(shelf is handled, pack is not
touched)



STEP 4
NoTouch™ shelf (w/sterile
pack) is transported to OT to
be opened by Nurse

NoTouch™ system is used with Pegasus racks and carts

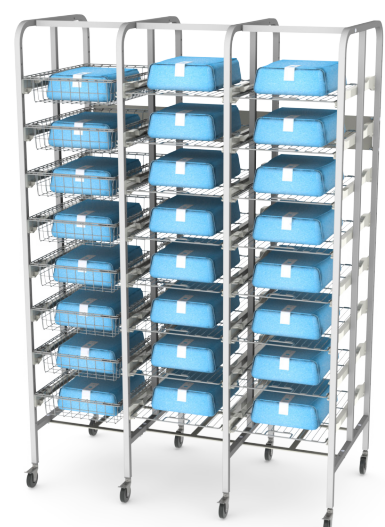
Stainless steel flat shelves and baskets can be stored and moved in carts and racks as part of the NoTouch™ process



Hermes case carts



Echidna carts



Echidna/open frame racks

Kanban inventory management

The KANBAN 2-BIN system is a lean supply strategy which saves valuable nursing and materials management time while rationalising and rotating inventory

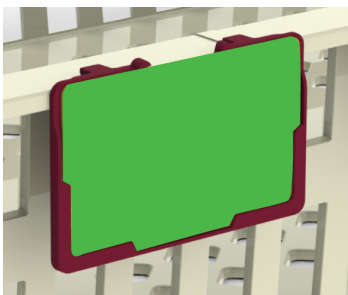


KANBAN 2-BIN Features

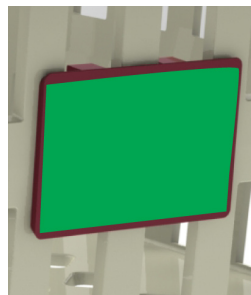
- Baskets are divided in half so that the front half is identical to the back half
- Stock levels are determined to match restocking schedules and are equally split between front and rear basket compartments
- Multiple dividers possibilities - compartments are set to match stock stored
- Can be used with any Pegasus rack, Cabinet, Apollo cart, Ecoline cart, Salus cart
- Combine with colour coded handles to store goods in appropriate categories/departments for better stock identification
- Optional RFID antenna to automatically transmits ordering data through RFID reader

KANBAN 2-BIN Options

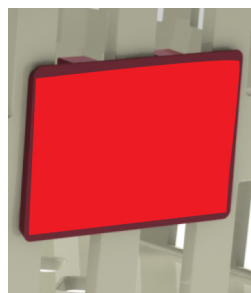
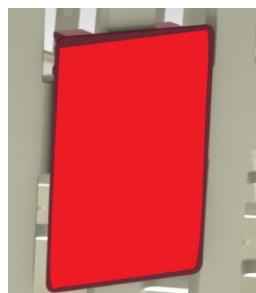
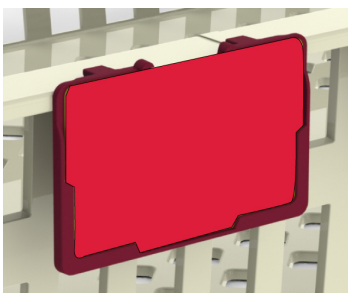
Label holders with coloured cards



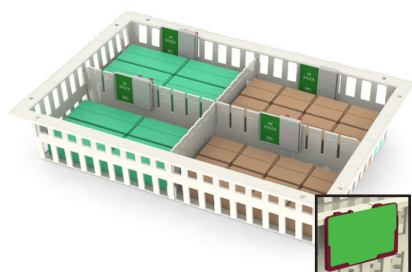
Label holders with cover - vertical or horizontal



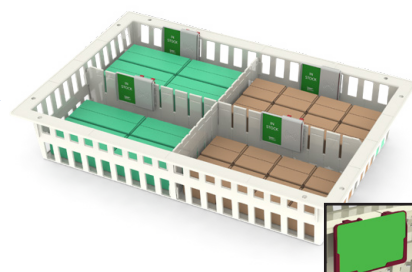
EZ-Swipe cards



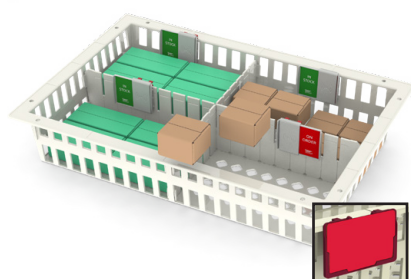
KANBAN 2-BIN Workflow



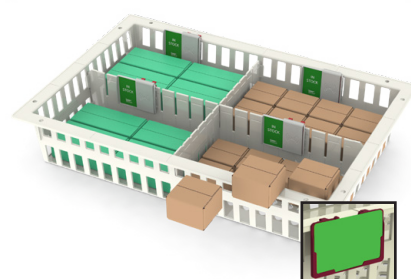
Based on historical analysis, the total stock requirements are identified.
Basket compartments are fully stocked



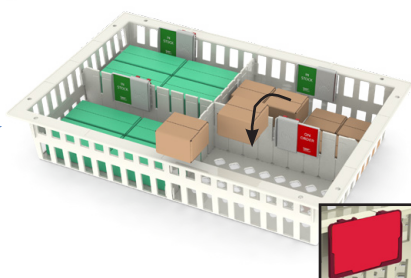
The total consumption is divided into two and placed respectively in the "Main compartment" and the "Backup compartment"



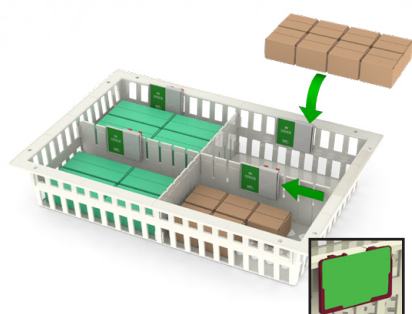
The clinician who takes the last item identifies the bin needs re-ordering.
EZ-SWIPE: move slider to the left (red)
LBL HOLDER: change to red card, place green card in base of basket



Clinicians take from the front bin
(rear bin houses back-up supplies)



The clinician has back up stock available in a rear bin to continue patient care



Supply tech replenishes order.
Rotate remaining stock from rear to front.
EZ-SWIPE: move slider to the right (green)
LBL HOLDER: change to green card, place red card in base of basket
New supplies are placed in rear bin

Suture storage

The organisation of sutures is vital in theatres and store rooms. With the many variations of sutures stored, it is important that they are separated and easily accessible for personnel.

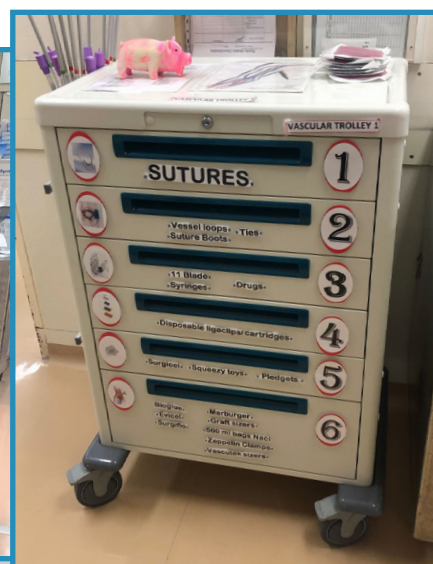
NSC have a range of suture storage options utilising either angled chrome wire shelves, flat chrome wire shelves, Pegasus racks and carts. Angled modules and shelves are ideal for suture storage which allow for quick recognition.

Features:

- No more cardboard boxes to store sutures – meeting infection control guidelines
- Have a single storage bank for all sutures
- Pegasus racks and carts can incorporate with 5cm or 10cm baskets
- Lightweight baskets can be removed easily for stock rotation and restocking
- Hundreds of divider options to store any size of sutures
- Pegasus racks can be installed with any number of bays
- Baskets can be inserted into Ecoline carts, Echidna carts or Apollo carts for moving sutures



Angled modules and shelves allow for quick identification and improved organisation of sutures



Catheter storage

Providing secure and durable storage of high value and various sized catheters, stents, balloons and consumables is essential for catheter labs, medical imaging and radiology clinics

NSC has a range of storage solutions ideal for catheter laboratories and medical imaging departments.

These systems include Pegasus racks with retractable catheter hooks or catheter boxes; Apollo carts; catheter cabinets, catheter trolleys and chrome wire catheter baskets. All of these storage systems can be incorporated into an overall solution specific to meet your cath lab storage requirements.



The Pegasus catheter retractable hooks have been made uniquely for storing & accessing valuable catheters and stents



Height adjustable tables

NSC height adjustable CSSD packing tables are manufactured with stainless steel to ensure a high quality and durable finish. They are custom designed and manufactured to suit the individual requirements of the CSSD and its personnel.

- Australian made
- Available in various sizes up to 2.3 metres
- Standard with castors and electric linak lifting legs
- Linak lifting equipment allows the user to raise or lower table to height required (750mm - 1400mm)
- Customise using a variety of options and accessories



Multiple tables can be installed side-by-side or behind each other



ACCESSORIES FOR HEIGHT ADJUSTABLE TABLES



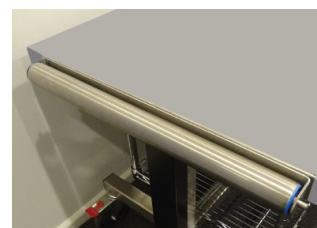
MEK DAYA25130
Daylight Omega 7
magnifier glass LED



C DS112D
Monitor arm holder



Rear roll holder



Conveyor roller
side or front



Rear wire shelves.
Single or double



Underbench wire shelf
Single or double



Keyboard holder retractable



Keyboard flat medical



LED light strip (under shelf)



Powerboard
can be mounted anywhere
on table



Custom units

MOBILE WRAP RACKS

NSC mobile wrap racks are designed to securely hold and store kimguard and other sterilisation wraps.

Standard design includes chrome wire shelf, 4 horizontal wrap bars with anti-slip O-rings to prevent wrap sliding off and 125mm castors (2 brake, 2 swivel) for streamlined movement. Lower chrome wire shelf ensures that sterile wrap won't fall on floor and be potentially contaminated

Sizes: 610 x 1520 x 1540mm, 610 x 1220 x 1540mm, 530 x 1520 x 1540mm, 530 x 1220 x 1540mm



CRUTCH RACKS

Crutch racks are manufactured in two styles depending on the type of crutches being stored (under arm and forearm).

Manufactured in various sizes utilising our chrome wire shelves and specially made stainless steel mounts.

Grids are used to store crutches so that they are upright and organised if wrapped in plastic.

Grids are available in 460 x 760mm, 610 x 910mm and 460 x 1070mm



OXYGEN CYLINDER TROLLEY

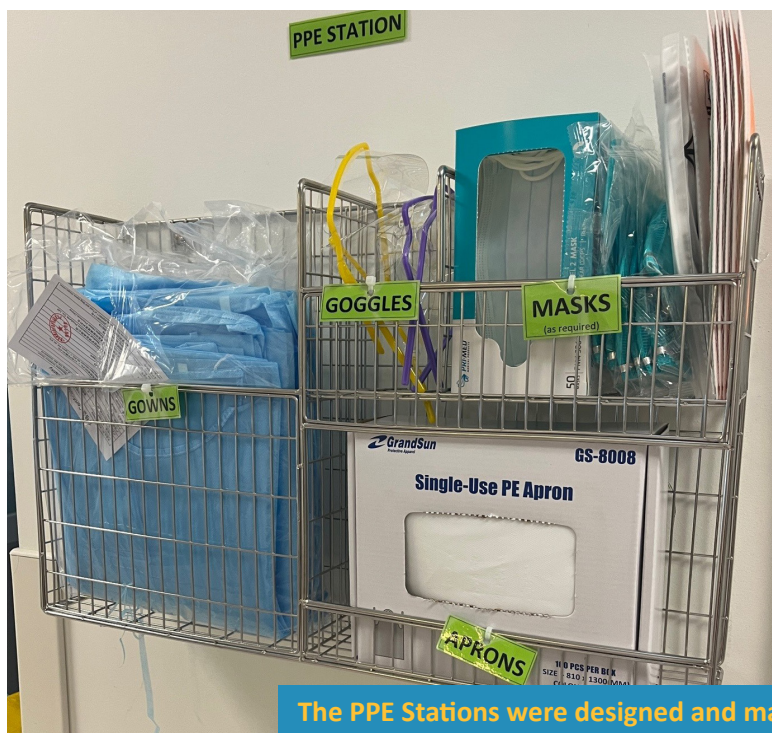
Designed by NSC specially for Australian oxygen tanks/cylinders

- Securely store and manoeuvre 15 cylinders
- Installed with heavy duty 125mm castors (2 brake, 2 swivel)
- Combination of heavy duty chrome wire and stainless steel
- Handle to easily control and move the trolley
- Size: 460 x 760 x 1090mm



These trolleys have been designed specially for Australian sized oxygen tanks

PPE STATION



Different compartments to store essential PPE items - disposable gowns, aprons, face masks, gloves, disinfection bottles, eye wear and other items

- Manufactured with high quality stainless steel wire
- Unique soft edged design, removes harsh edges
- Can be mounted to wall using the 4 wall mounts
- Front edge ensures items do not fall from the station

The PPE Stations were designed and made in conjunction with an Australian hospital





Let NSC Support You

**BE SUPPORTED BY AN
AUSTRALIAN COMPANY**

PROVIDING VALUE BEYOND THE PRODUCT

What makes NSC different to our competitors to support you?

- A proudly Australian owned and founded company
- Combining 25 years of expertise in the healthcare industry
- Creating value for our customers beyond the product
- Working with our customers to offer specialised solutions
- Offering a large product range focused on cost effectiveness, patient care and productivity
- Low overheads allows us to provide cost savings to our customers compared to the multinationals
- Coordinated, whole company approach to every customer
- Establishing trust for long term customer relationships

Who are we?

National Surgical Corporation (NSC) is an import manufacturer in the healthcare industry, distributing surgical instruments, consumables, equipment and shelving all major hospitals and healthcare facilities throughout Australia. Our extensive product range can be used by all specialist disciplines and departments within a hospital, day surgery or specialist centre.

Let NSC support you and your department

Don't be afraid to change, NSC will support and assist you throughout every step. NSC has extensive training and inservicing material available and can tailor a program to meet your individual needs so that all personnel are aware of how the product operates. Switching to NSC can save you significantly and we can show you how!

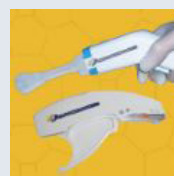
Our range includes:



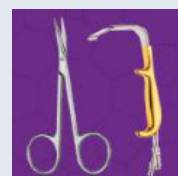
Wound Drains



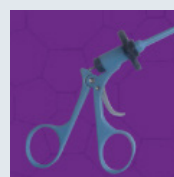
Electrosurgical Range



OT & General Consumables



Surgical Instruments



Laparoscopic Instruments



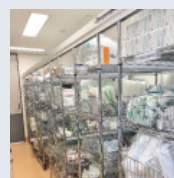
Medichill Ice & Heat Packs



Protection Products



Cleaning & Sterilisation



Shelving & Storage



Pegasus High Density Storage

CUSTOMER SERVICE

Contact your National Surgical Corporation Account Manager for more information

Phone: 1800 138 138 (free call) Fax: 1800 138 140 (free fax)

info@nationalsurgical.com.au

www.nationalsurgical.com.au